

812.003



812.010




812.031



812.036



article: SEMINATO pattern  
 composition: 32%CO-18%LI-25%VI-25%PA  
 width: 140 cm +/- 3%  
 weight: 545 gr/ml - 389 gr/sqm +/- 5%  
 repeat: warp 21 cm - weft 10,6 cm  
 Abrasion Martindale: 90000 cycles +/- 10%  
 Care instructions: 



TORRI LANA  
1885

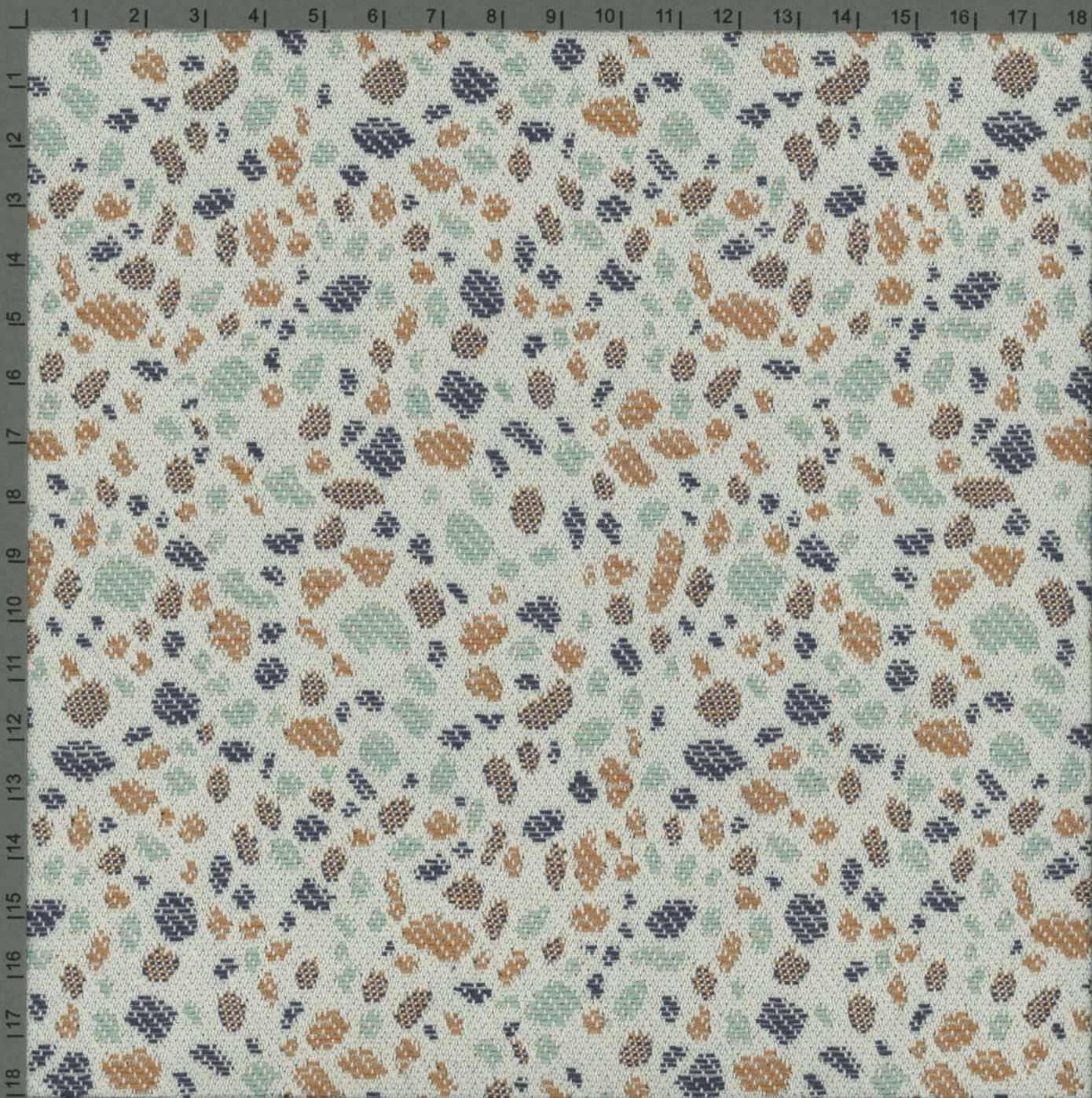
living YARN  
PERFORMANCE

Article:	SEMINATO pattern
Composition:	32%CO-18%LI-25%VI-25%PA
Width:	140 cm +/- 3%
Weight:	545 gr/ml - 389 gr/sqm +/- 5%
Repeat:	warp 21 cm - weft 10,6 cm
Abrasion Martindale:	90000 cycles +/- 10% UNI EN ISO 12947-2:2000
Care instructions:	   
Pilling:	grade 4 (change at 5000 turns) UNI EN ISO 12945-2:2002
Dry clean fastness:	Colour change 4-5 UNI EN ISO D01:1995
Rub fastness:	Dry 4-5 / Wet 2-3 (Black WET 2) UNI EN ISO 105-X12:1995
Light fastness:	Light colour 4-5 / Medium-Dark colour 5 UNI EN ISO 105-B02
Flame resistance:	BS 5852-1 (1979) CIGARETTE BS 5852:2006 CIGARETTE BS 5852-1 (1979) MATCH BS 5852:2006 MATCH CAL TB 117:2013
Notes:	In compliance with the "REACH" regulation

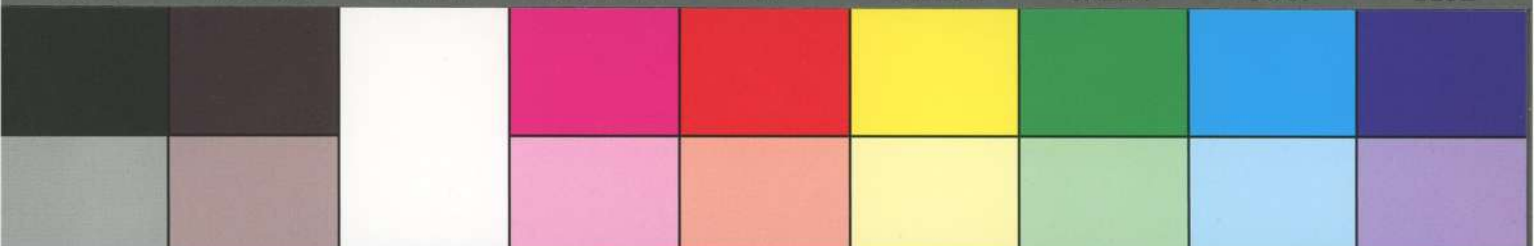


**TORRI LANA**  
1885

CENTIMETRES



BLACK 3/COLOR WHITE MAGENTA RED YELLOW GREEN CYAN BLUE



article: SEMINATO pattern  
composition: 32%CO-18%LI-25%VI-25%PA  
width: 140 cm +/- 3%  
weight: 545 gr/ml - 389 gr/sqm +/- 5%  
repeat: warp 21 cm - weft 10,6 cm  
Abrasion Martindale: 90000 cycles +/- 10%  
Care instructions: 

living YARN  
PERFORMANCE



TORRI LANA  
1885