

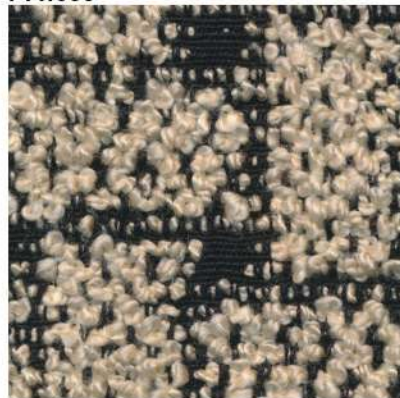
711.000



711.003



711.006



711.009



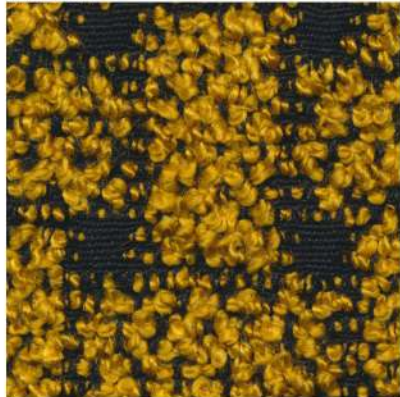
711.010



711.011



711.012




711.062



711.065







article: **PARALLEL pattern**
 composition: **20%CO-31%WO-23%PC-24%PL-2%PA**
 width: **137 cm +/- 3%**
 weight: **850 gr/ml - 620 gr/sqm +/- 5%**
 repeat: **warp 5,5 cm - weft 6 cm**
 Abrasion Martindale: **30000 cycles +/- 10%**
 Care instructions: 

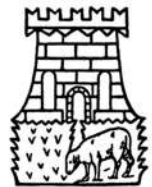


TORRI LANA
1885

711.070



article: **PARALLEL pattern**
composition: **20%CO-31%WO-23%PC-24%PL-2%PA**
width: **137 cm +/- 3%**
weight: **850 gr/ml - 620 gr/sqm +/- 5%**
repeat: **warp 5,5 cm - weft 6 cm**
Abrasion Martindale: **30000 cycles +/- 10%**
Care instructions:    



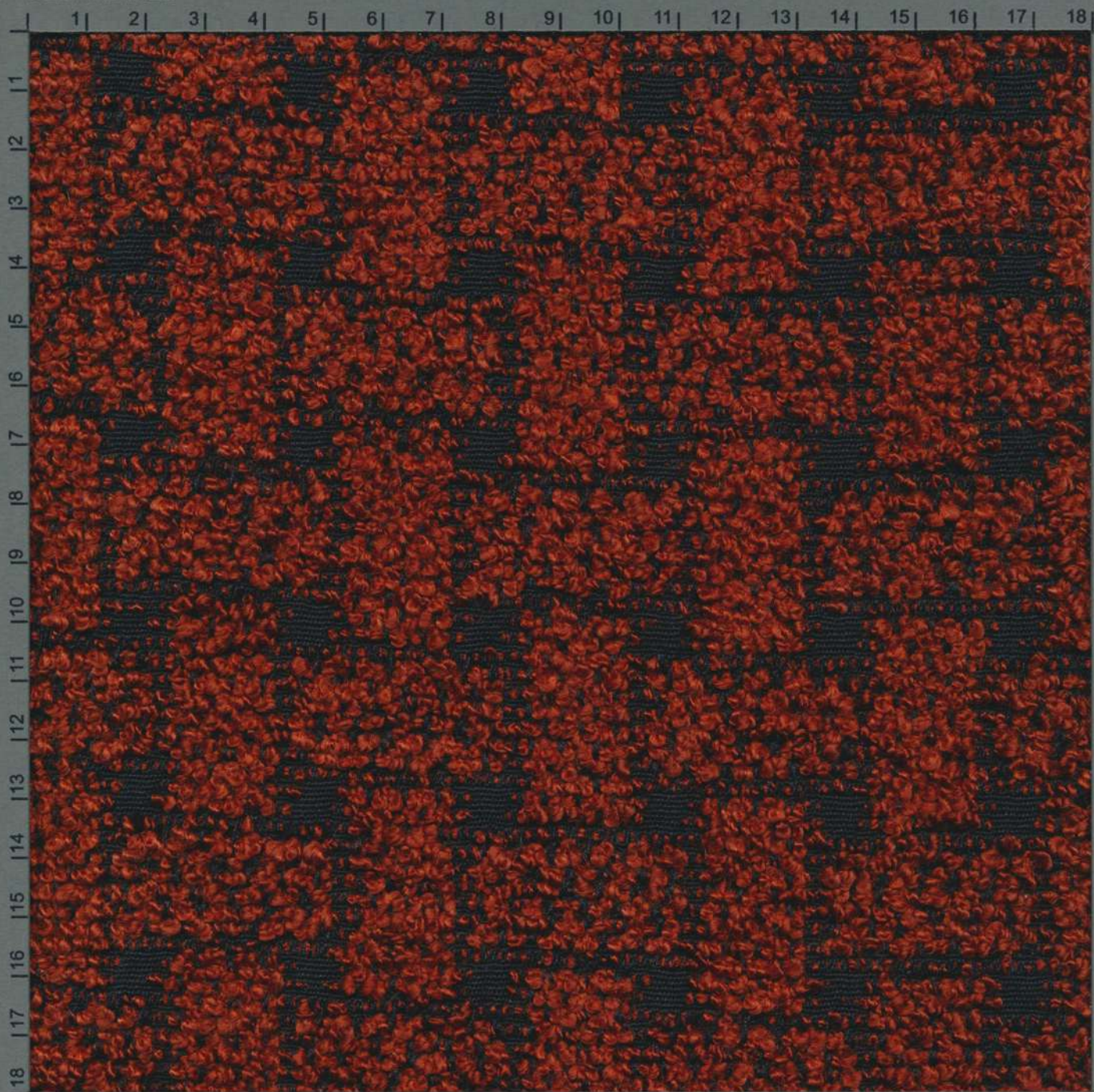
TORRI LANA
1885

Article:	PARALLEL pattern
Composition:	20%CO-31%WO-23%PC-24%PL-2%PA
Width:	137 cm +/- 3%
Weight:	850 gr/ml - 620 gr/sqm +/- 5%
Repeat:	warp 5,5 cm - weft 6 cm
Abrasion Martindale:	30000 cycles +/- 10% UNI EN ISO 12947-2:2000
Care instructions:	
Pilling:	grade 4 (change at 5000 turns) UNI EN ISO 12945-2:2002
Dry clean fastness:	Colour change 4-5 UNI EN ISO D01:1995
Rub fastness:	Dry 4-5 / Wet 2-3 (Black WET 2) UNI EN ISO 105-X12:1995
Light fastness:	Light colour 4-5 / Medium-Dark colour 5 UNI EN ISO 105-B02
Flame resistance:	BS 5852-1 (1979) CIGARETTE BS 5852:2006 CIGARETTE BS 5852:2006 MATCH CAL TB 117:2013
Notes:	In compliance with the "REACH" regulation




TORRI LANA
1885

CENTIMETRES



BLACK 3/COLOR WHITE MAGENTA RED YELLOW GREEN CYAN BLUE



article: **PARALLEL pattern**
composition: **20%CO-31%WO-23%PC-24%PL-2%PA**
width: **137 cm +/- 3%**
weight: **850 gr/ml - 620 gr/sqm +/- 5%**
repeat: **warp 5,5 cm - weft 6 cm**
Abrasion Martindale: **30000 cycles +/- 10%**
Care instructions: 



TORRI LANA
1885