

766.001



766.002



766.003



766.004



766.006



766.021



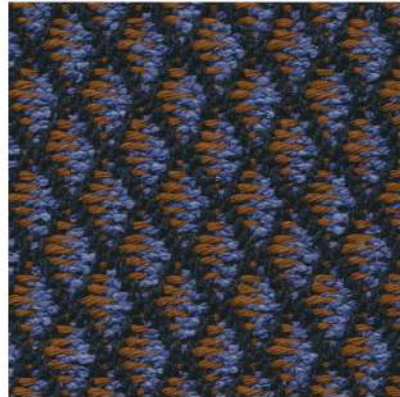
766.023







766.027



766.028



article: **NANGAR pattern**  
 composition: **52%CO-15%VI-25%PL-8%LI**  
 width: **140 cm +/- 3%**  
 weight: **855 gr/ml - 611 gr/sqm +/- 5%**  
 repeat: **warp cm - weft cm**  
 Abrasion Martindale: **45000 cycles +/- 10%**  
 Care instructions:    



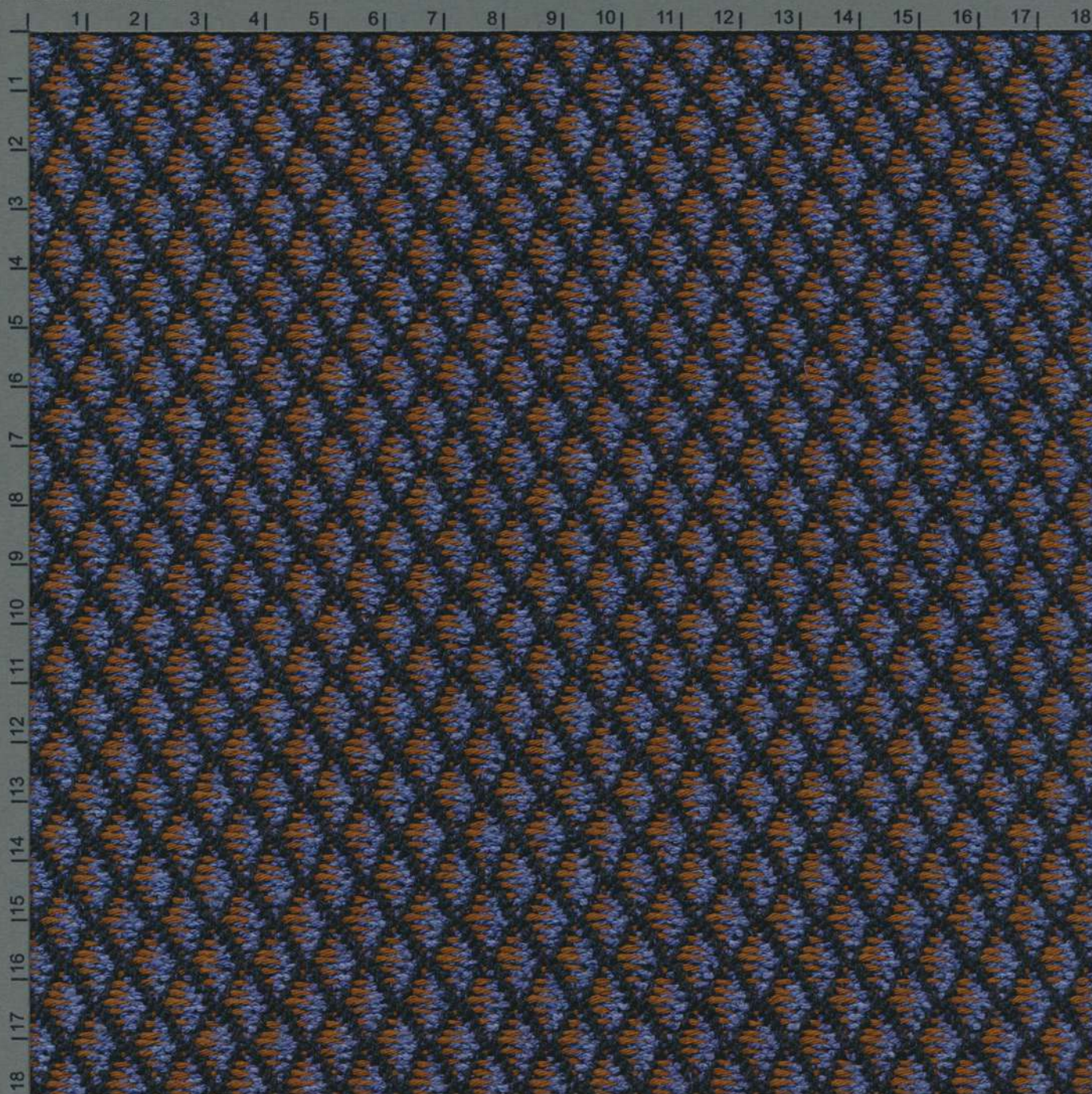
**TORRI LANA**  
1885

Article:	<b>NANGAR pattern</b>
Composition:	<b>52%CO-15%VI-25%PL-8%LI</b>
Width:	<b>140 cm +/- 3%</b>
Weight:	<b>855 gr/ml - 611 gr/sqm +/- 5%</b>
Repeat:	<b>warp cm - weft cm</b>
Abrasion Martindale:	<b>45000 cycles +/- 10%</b> <b>UNI EN ISO 12947-2:2000</b>
Care instructions:	
Pilling:	<b>grade 4 (change at 5000 turns)</b> <b>UNI EN ISO 12945-2:2002</b>
Dry clean fastness:	<b>Colour change 4-5</b> <b>UNI EN ISO D01:1995</b>
Rub fastness:	<b>Dry 4-5 / Wet 2-3 (Black WET 2)</b> <b>UNI EN ISO 105-X12:1995</b>
Light fastness:	<b>Light colour 4-5 / Medium-Dark colour 5</b> <b>UNI EN ISO 105-B02</b>
Flame resistance:	<b>BS 5852-1 (1979) CIGARETTE</b> <b>BS 5852:2006 CIGARETTE</b> <b>BS 5852-1 (1979) MATCH</b> <b>BS 5852:2006 MATCH</b> <b>CAL TB 117:2013</b>
Notes:	<b>In compliance with the "REACH" regulation</b>



**TORRI LANA**  
1885

CENTIMETRES



BLACK 3/COLOR WHITE MAGENTA RED YELLOW GREEN CYAN BLUE



article: **NANGAR pattern**  
composition: **52%CO-15%VI-25%PL-8%LI**  
width: **140 cm +/- 3%**  
weight: **855 gr/ml - 611 gr/sqm +/- 5%**  
repeat: **warp cm - weft cm**  
Abrasion Martindale: **45000 cycles +/- 10%**  
Care instructions:    



**TORRI LANA**  
1885