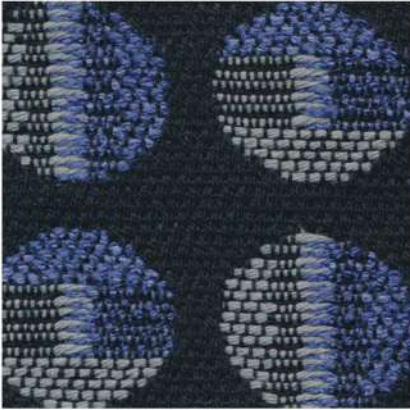
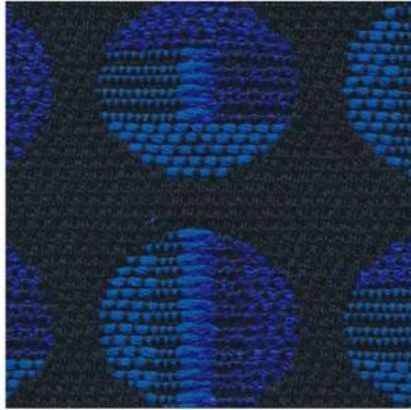


680.000



680.003



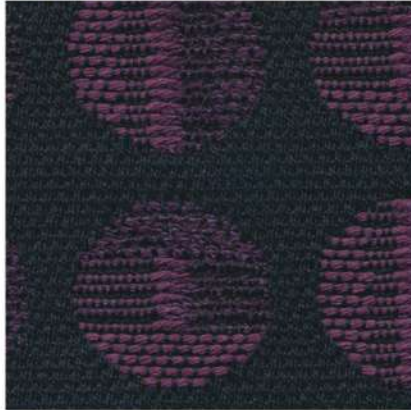
680.006



680.012



680.014



article: **MOONLIGHT pattern**
 composition: **52%CO-8%LI-15%VI-25%PL**
 width: **140 cm +/- 3%**
 weight: **890 gr/ml - 636 gr/sqm +/- 5%**
 repeat: **warp 6,4 cm - weft 6,4 cm**
 Abrasion Martindale: **30000 cycles +/- 10%**
 Care instructions: 



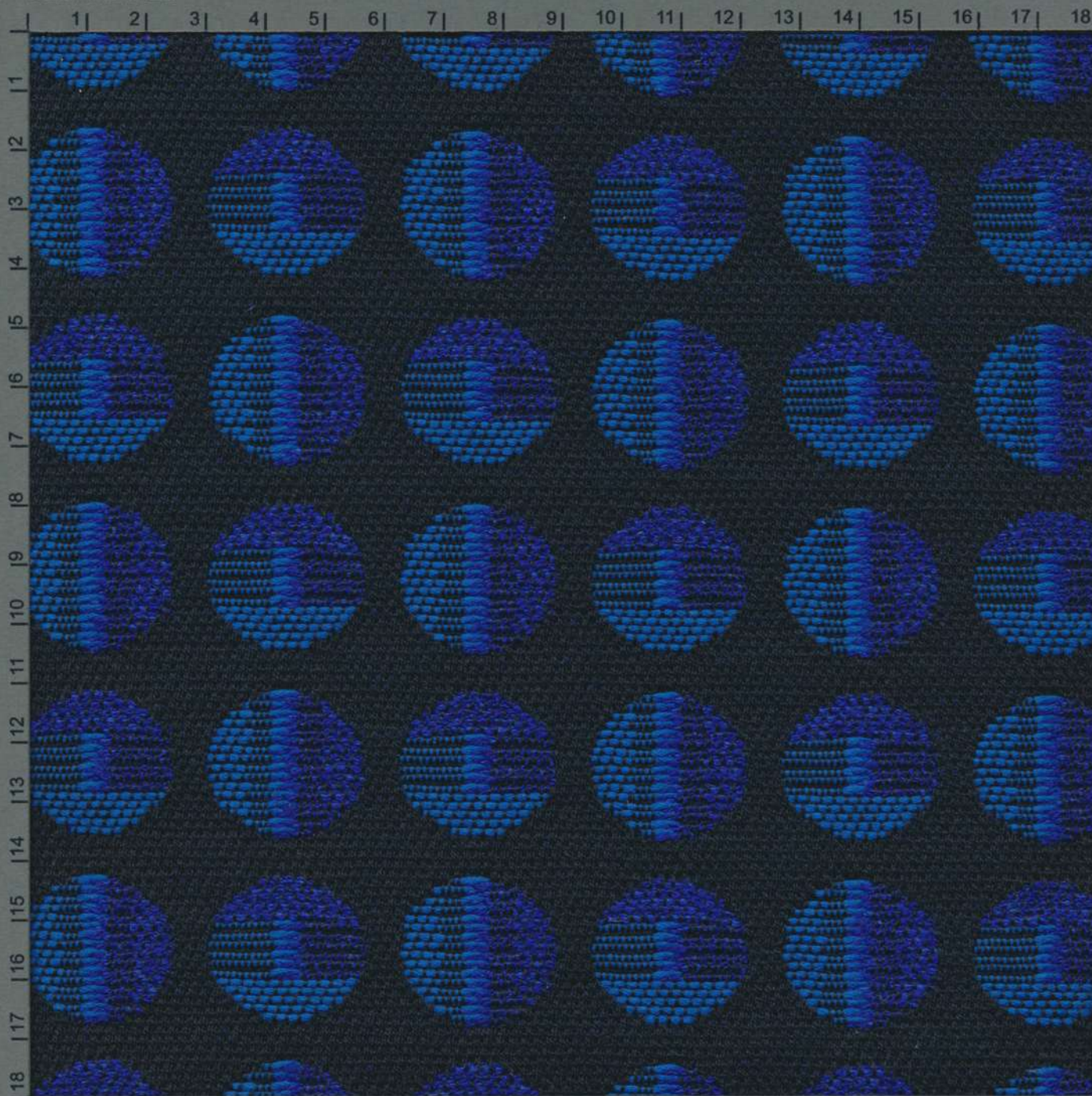
TORRI LANA
1885

Article:	MOONLIGHT pattern
Composition:	52%CO-8%LI-15%VI-25%PL
Width:	140 cm +/- 3%
Weight:	890 gr/ml - 636 gr/sqm +/- 5%
Repeat:	warp 6,4 cm - weft 6,4 cm
Abrasion Martindale:	30000 cycles +/- 10% UNI EN ISO 12947-2:2000
Care instructions:	
Pilling:	grade 3/4 (change at 5000 turns) UNI EN ISO 12945-2:2002
Dry clean fastness:	Colour change 4-5 UNI EN ISO D01:1995
Rub fastness:	Dry 4-5 / Wet 2-3 (Black WET 2) UNI EN ISO 105-X12:1995
Light fastness:	Light colour 4-5 / Medium-Dark colour 5 UNI EN ISO 105-B02
Flame resistance:	BS 5852-1 (1979) CIGARETTE BS 5852:2006 CIGARETTE BS 5852-1 (1979) MATCH BS 5852:2006 MATCH CAL TB 117:2013
Notes:	In compliance with the "REACH" regulation



TORRI LANA
1885

CENTIMETRES



BLACK 3/COLOR WHITE MAGENTA RED YELLOW GREEN CYAN BLUE



article: **MOONLIGHT pattern**
 composition: **52%CO-8%LI-15%VI-25%PL**
 width: **140 cm +/- 3%**
 weight: **890 gr/ml - 636 gr/sqm +/- 5%**
 repeat: **warp 6,4 cm - weft 6,4 cm**
 Abrasion Martindale: **30000 cycles +/- 10%**
 Care instructions: 



TORRI LANA
1885