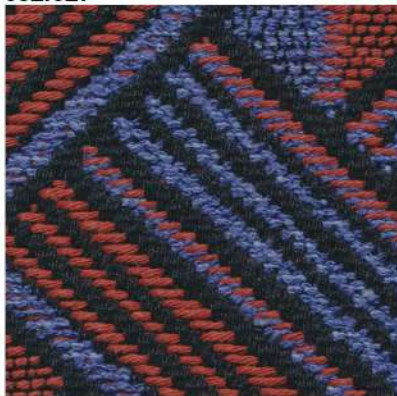


652.020



652.027



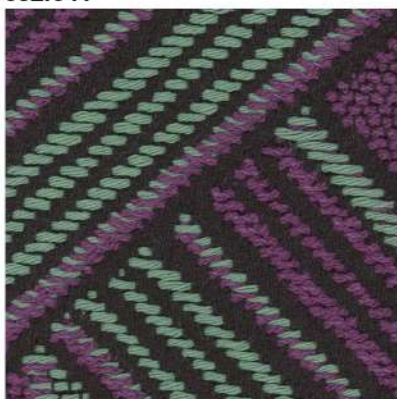
652.029



652.032







652.041




652.042



article: **COMO pattern**
 composition: **52%CO-15%VI-25%PL-8%LI**
 width: **140 cm +/- 3%**
 weight: **930 gr/ml - 664 gr/sqm +/- 5%**
 repeat: **warp 9 cm - weft 10 cm**
 Abrasion Martindale: **20000 cycles +/- 10%**
 Care instructions:    



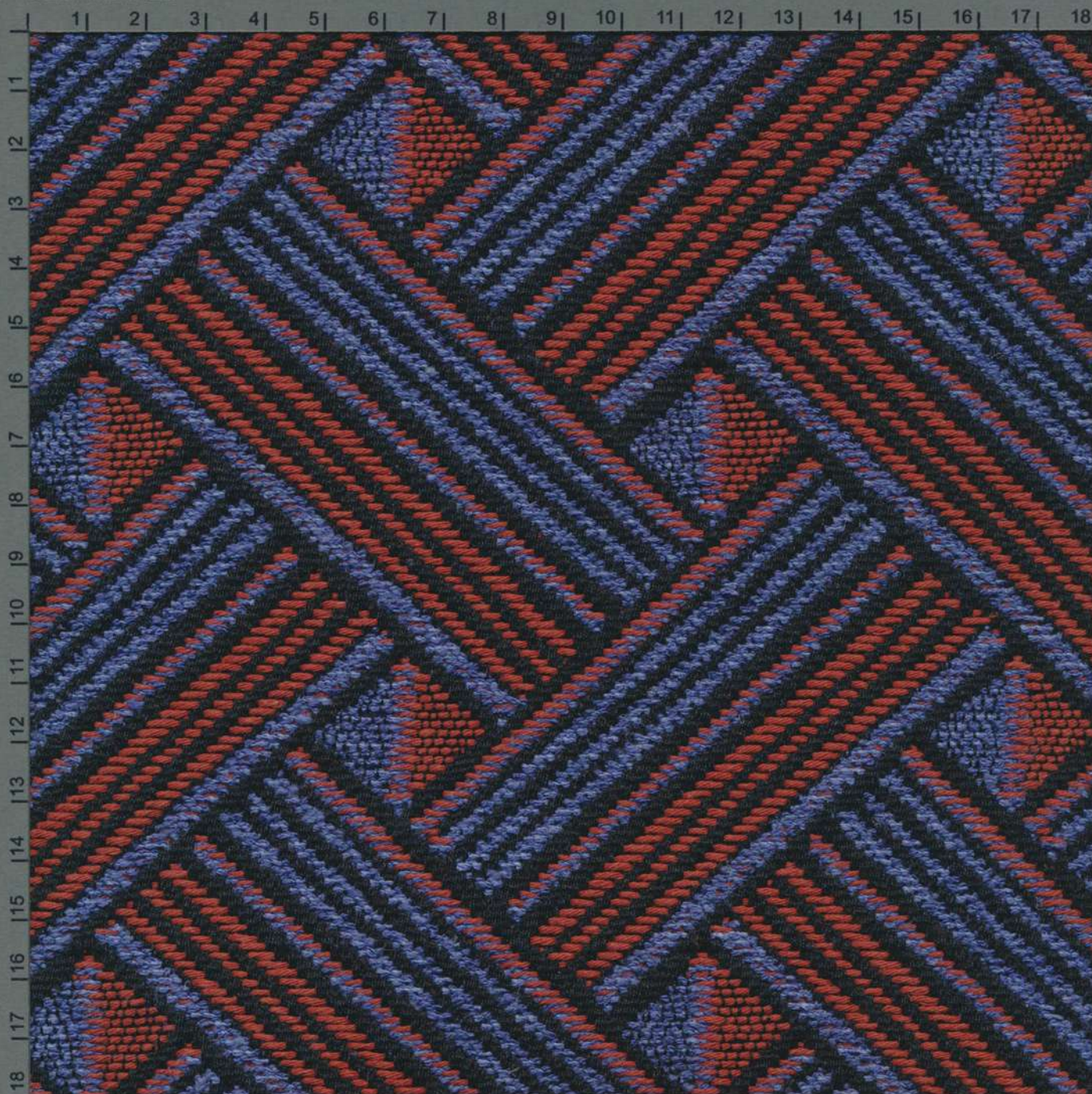
TORRI LANA
1885

Article:	COMO pattern
Composition:	52%CO-15%VI-25%PL-8%LI
Width:	140 cm +/- 3%
Weight:	930 gr/ml - 664 gr/sqm +/- 5%
Repeat:	warp 9 cm - weft 10 cm
Abrasion Martindale:	20000 cycles +/- 10% UNI EN ISO 12947-2:2000
Care instructions:	
Pilling:	grade 3 (change at 5000 turns) UNI EN ISO 12945-2:2002
Dry clean fastness:	Colour change 4-5 UNI EN ISO D01:1995
Rub fastness:	Dry 4-5 / Wet 2-3 (Black WET 2) UNI EN ISO 105-X12:1995
Light fastness:	Light colour 4-5 / Medium-Dark colour 5 UNI EN ISO 105-B02
Flame resistance:	BS 5852-1 (1979) CIGARETTE BS 5852:2006 CIGARETTE BS 5852-1 (1979) MATCH BS 5852:2006 MATCH CAL TB 117:2013
Notes:	In compliance with the "REACH" regulation




TORRI LANA
1885

CENTIMETRES



BLACK 3/COLOR WHITE MAGENTA RED YELLOW GREEN CYAN BLUE



article: **COMO pattern**
composition: **52%CO-15%VI-25%PL-8%LI**
width: **140 cm +/- 3%**
weight: **930 gr/ml - 664 gr/sqm +/- 5%**
repeat: **warp 9 cm - weft 10 cm**
Abrasion Martindale: **20000 cycles +/- 10%**
Care instructions: 



TORRI LANA
1885