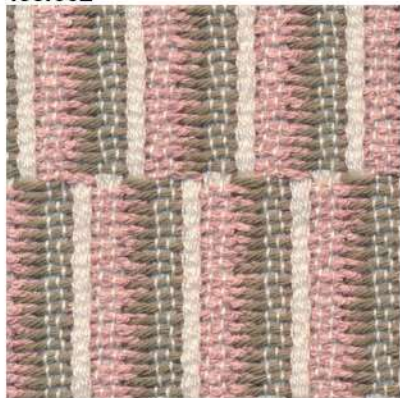
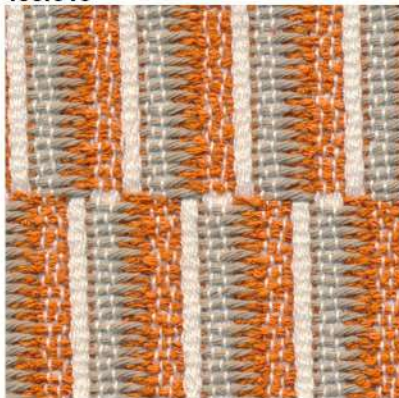


458.002



458.013



458.032



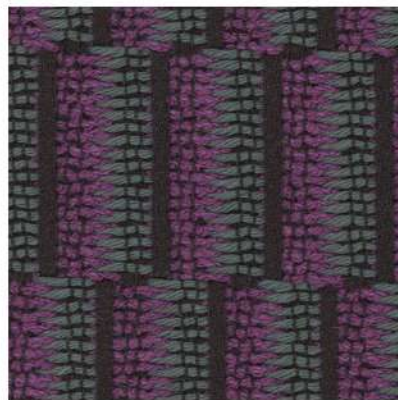
458.035




458.036




458.037



article: **BULIO pattern**
 composition: **72%CO-8%LI-15%VI-5%PA**
 width: **140 cm +/- 3%**
 weight: **845 gr/ml - 604 gr/sqm +/- 5%**
 repeat: **warp 5,9 cm - weft 15,8 cm**
 Abrasion Martindale: **25000 cycles +/- 10%**
 Care instructions: 



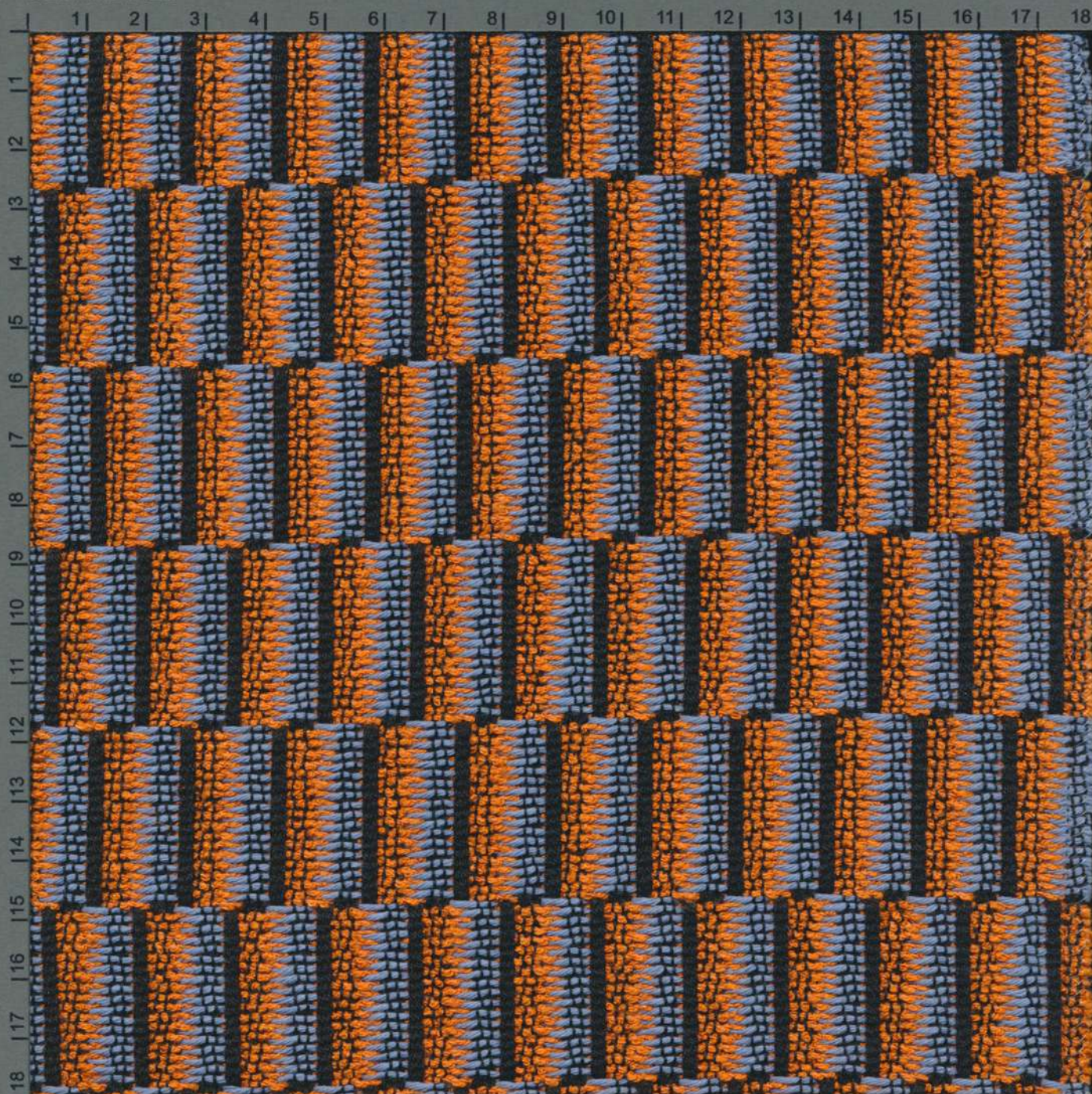
TORRI LANA
1885

Article:	BULIO pattern
Composition:	72%CO-8%LI-15%VI-5%PA
Width:	140 cm +/- 3%
Weight:	845 gr/ml - 604 gr/sqm +/- 5%
Repeat:	warp 5,9 cm - weft 15,8 cm
Abrasion Martindale:	25000 cycles +/- 10% UNI EN ISO 12947-2:2000
Care instructions:	
Pilling:	grade 3/4 (change at 5000 turns) UNI EN ISO 12945-2:2002
Dry clean fastness:	Colour change 4-5 UNI EN ISO D01:1995
Rub fastness:	Dry 4-5 / Wet 2-3 (Black WET 2) UNI EN ISO 105-X12:1995
Light fastness:	Light colour 4-5 / Medium-Dark colour 5 UNI EN ISO 105-B02
Flame resistance:	BS 5852-1 (1979) CIGARETTE BS 5852:2006 CIGARETTE BS 5852-1 (1979) MATCH BS 5852:2006 MATCH CAL TB 117:2013 FAIL*
Flame resistance notes:	*CAL TB 117:2013 fail: SECTION 2. BARRIER MATERIALS TEST Upholstery cover fabrics that fail the cover fabric test described in Section 1 can be used in upholstered furniture if a barrier (interliner) material that passes this test method is used. When a barrier is required, the barrier material must cover all sides and top of the seating cushion(s). Exceptions: Non-reversible and non-detachable seating cushions do not require the use of the barrier material on the underside of the seating cushion.
Notes:	In compliance with the "REACH" regulation



TORRI LANA
1885

CENTIMETRES



BLACK 3/COLOR WHITE MAGENTA RED YELLOW GREEN CYAN BLUE



article: **BULIO pattern**
composition: **72%CO-8%LI-15%VI-5%PA**
width: **140 cm +/- 3%**
weight: **845 gr/ml - 604 gr/sqm +/- 5%**
repeat: **warp 5,9 cm - weft 15,8 cm**
Abrasion Martindale: **25000 cycles +/- 10%**
Care instructions: 



TORRI LANA
1885